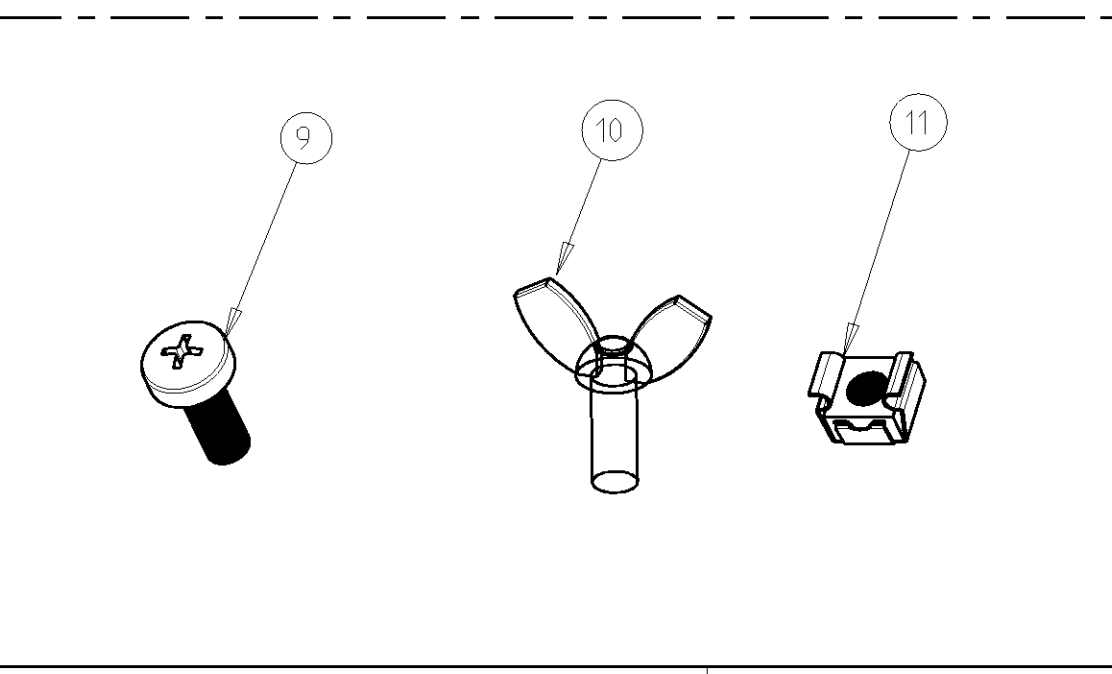
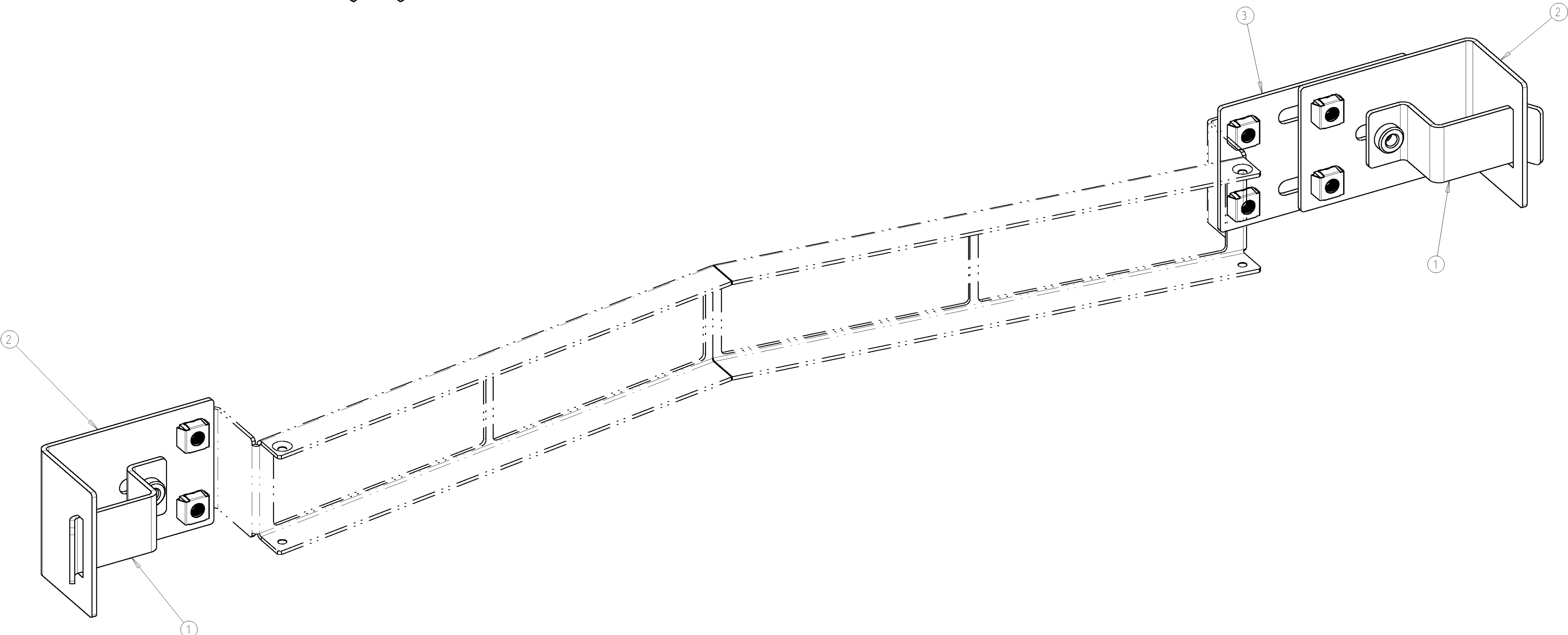
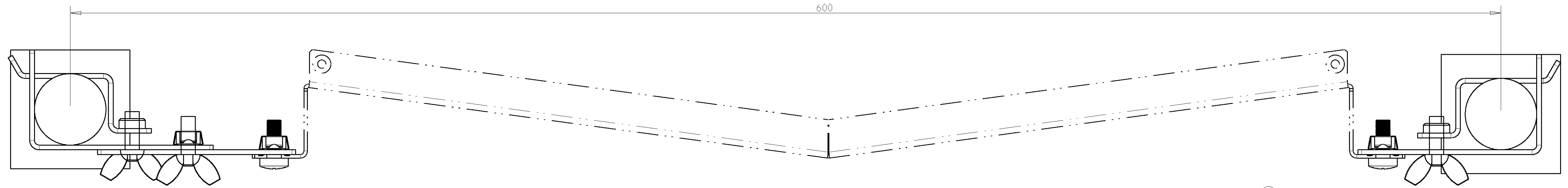
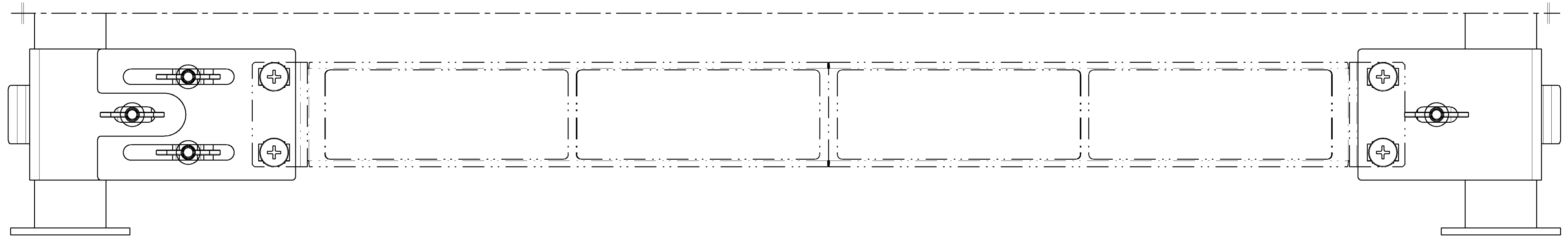


8 7 6 5 4 3 2 1



18	10	6	CAGE NUT M6 2.7mm	11
6	4	4	WING SCREW M6x16	10
16	8	4	SCREW DIN 7985 M6x12	9
1	-	-	SLIDING PLATE - SHK 4U	8
2	-	-	FIXED BRACKET - SHK 4U	7
2	-	-	HINGEABLE BRACKET - SHK 4U	6
-	1	-	SLIDING PLATE - SHK 2U	5
-	2	-	FIXED BRACKET - SHK 2U	4
-	-	1	SLIDING PLATE - SHK 1U	3
-	-	2	FIXED BRACKET - SHK 1U	2
-	2	2	HINGEABLE BRACKET - SHK	1
0--4	0--2	0--1		
QTY	QTY	QTY	DESCRIPTION	ITEM

CUSTOMER DRAWING AMP part N° : 1671189

DRAWING STATUS: **RELEASED** REVISION DESCRIPTION: -

DRAWING BY: J. VAN OUTRYVE DATE: 26-JUN-08 DRAWING REVISION BY: J. VAN OUTRYVE DATE: 07-JUL-08 VOLUME in mm³: 1150233

SCALE: 1000 DRAWING FORMAT: A1 DRAWING TITLE: **SUBFLOOR HOLDER KIT**

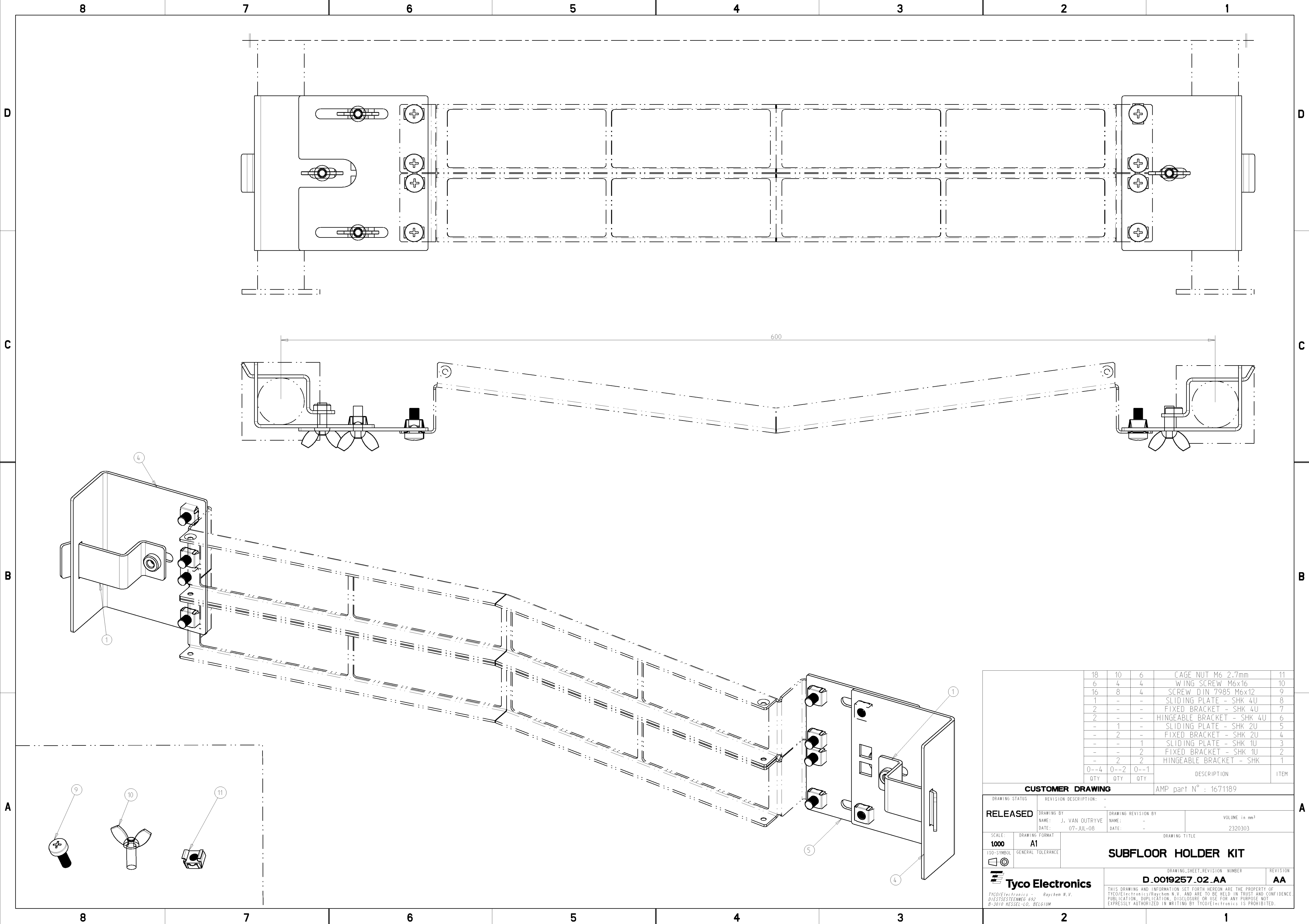
ISO-SYMBOL: GENERAL TOLERANCE: **DRAWING SHEET, REVISION NUMBER**

Tyco Electronics **D_0019257_01_AA** **AA**

TYCO/Electronics - Raychem N.V. DIESTSESTEENWEG 692 B-3010 HESSEL-LO, BELGIUM

THIS DRAWING AND INFORMATION SET FORTH HEREON ARE THE PROPERTY OF TYCO/Electronics/Raychem N.V. AND ARE TO BE HELD IN TRUST AND CONFIDENCE. PUBLICATION, DUPLICATION, DISCLOSURE OR USE FOR ANY PURPOSE NOT EXPRESSLY AUTHORIZED IN WRITING BY TYCO/Electronics IS PROHIBITED.

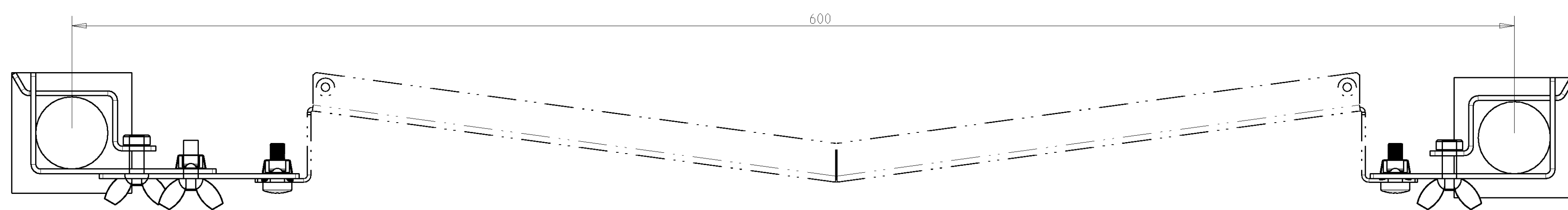
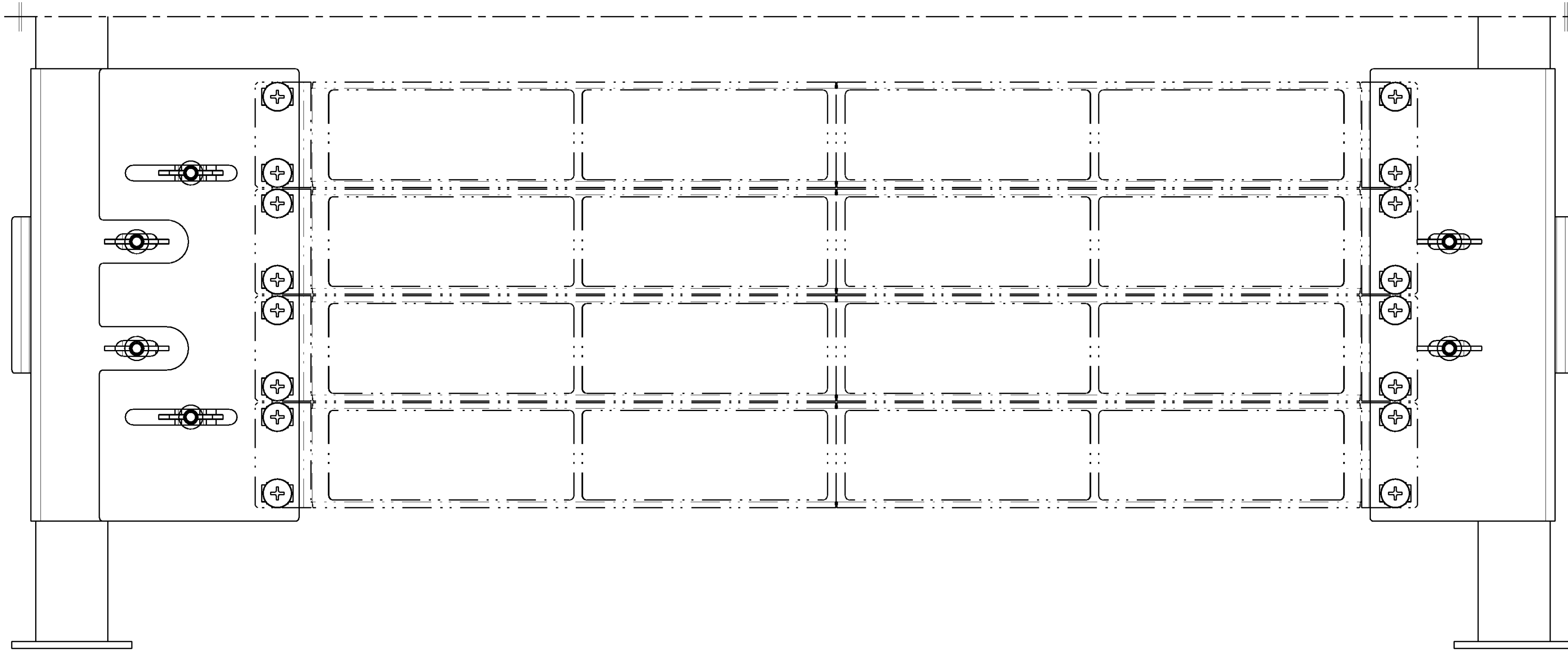
8 7 6 5 4 3 2 1



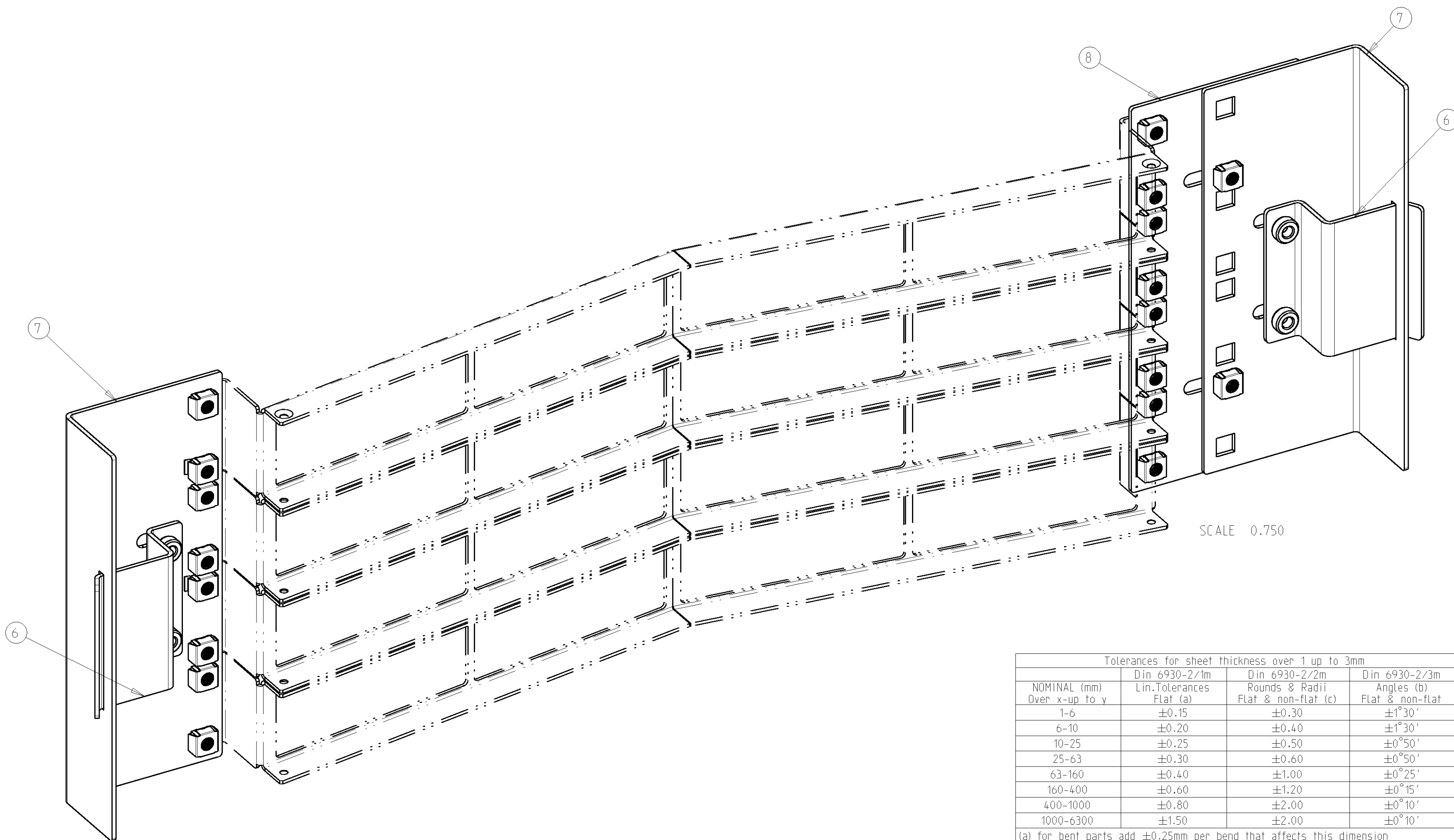
18	10	6	CAGE NUT M6 2.7mm	11
6	4	4	WING SCREW M6x16	10
16	8	4	SCREW DIN 7985 M6x12	9
1	-	-	SLIDING PLATE - SHK 4U	8
2	-	-	FIXED BRACKET - SHK 4U	7
2	-	-	HINGEABLE BRACKET - SHK 4U	6
-	1	-	SLIDING PLATE - SHK 2U	5
-	2	-	FIXED BRACKET - SHK 2U	4
-	-	1	SLIDING PLATE - SHK 1U	3
-	-	2	FIXED BRACKET - SHK 1U	2
-	2	2	HINGEABLE BRACKET - SHK	1
0--4	0--2	0--1	DESCRIPTION	ITEM
QTY	QTY	QTY		

CUSTOMER DRAWING AMP part N° : 1671189

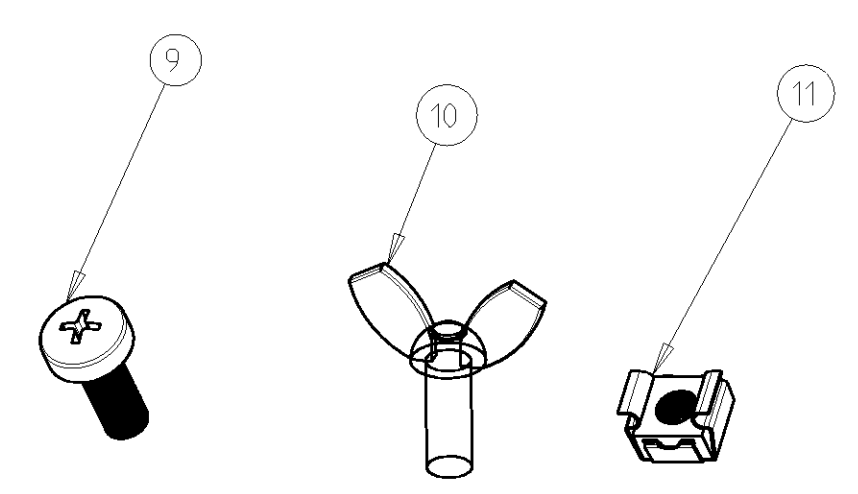
DRAWING STATUS	RELEASED	REVISION DESCRIPTION:	-
DRAWING BY	NAME: J. VAN OUTRYVE	DRAWING REVISION BY	NAME: -
DATE:	07-JUL-08	DATE:	-
SCALE:	1000	DRAWING FORMAT	A1
ISO-SYMBOL	GENERAL TOLERANCE	DRAWING TITLE	SUBFLOOR HOLDER KIT
		DRAWING SHEET, REVISION NUMBER	D.0019257.02_AA
<small>TYCO/Electronics - Raychem N.V. DIESTSESTEENWEG 692 B-3010 HESEL-LO, BELGIUM</small>		REVISION	AA
<small>THIS DRAWING AND INFORMATION SET FORTH HEREON ARE THE PROPERTY OF TYCO/Electronics/Raychem N.V. AND ARE TO BE HELD IN TRUST AND CONFIDENCE. PUBLICATION, DUPLICATION, DISCLOSURE OR USE FOR ANY PURPOSE NOT EXPRESSLY AUTHORIZED IN WRITING BY TYCO/Electronics IS PROHIBITED.</small>			



SCALE 0.750



SCALE 0.750



NOMINAL (mm)	Tolerances for sheet thickness over 1 up to 3mm		
	Din 6930-2/1m Lim. Tolerances	Din 6930-2/2m Rounds & Radii	Din 6930-2/3m Angles (b)
Over x-up to y	Flat (a)	Flat & non-flat (c)	Flat & non-flat
1-6	±0.15	±0.30	±1°30'
6-10	±0.20	±0.40	±1°30'
10-25	±0.25	±0.50	±0°50'
25-63	±0.30	±0.60	±0°50'
63-160	±0.40	±1.00	±0°25'
160-400	±0.60	±1.20	±0°15'
400-1000	±0.80	±2.00	±0°10'
1000-6300	±1.50	±2.00	±0°10'

(a) for bent parts add ±0.25mm per bend that affects this dimension
 (b) for angles : nominal = length of the longest leg
 (c) typical internal bend radius = sheet thickness
 (unless specified otherwise)

QTY	QTY	QTY	DESCRIPTION	ITEM
18	10	6	CAGE NUT M6 2.7mm	11
6	4	4	WING SCREW M6x16	10
16	8	4	SCREW DIN 7985 M6x12	9
1	-	-	SLIDING PLATE - SHK 4U	8
2	-	-	FIXED BRACKET - SHK 4U	7
2	-	-	HINGEABLE BRACKET - SHK 4U	6
-	1	-	SLIDING PLATE - SHK 2U	5
-	2	-	FIXED BRACKET - SHK 2U	4
-	-	1	SLIDING PLATE - SHK 1U	3
-	-	2	FIXED BRACKET - SHK 1U	2
-	2	2	HINGEABLE BRACKET - SHK	1

CUSTOMER DRAWING AMP part N° : 1671189

DRAWING STATUS: RELEASED	REVISION DESCRIPTION: -
DRAWING BY: J. VAN OUTRYVE	DRAWING REVISION BY: J. VAN OUTRYVE
DATE: 03-JUL-08	DATE: 07-JUL-08
VOLUME in mm³: 1900847	

SCALE: 0500 DRAWING FORMAT: A1
 ISO-SYMBOL: GENERAL TOLERANCE: DIN 6930-2/m

Tyco Electronics

SUBFLOOR HOLDER KIT

DRAWING SHEET, REVISION NUMBER: **D.0019257.03_AA** REVISION: **AA**

THIS DRAWING AND INFORMATION SET FORTH HEREON ARE THE PROPERTY OF TYCO/Electronics/Raychem N.V. AND ARE TO BE HELD IN TRUST AND CONFIDENCE. PUBLICATION, DUPLICATION, DISCLOSURE OR USE FOR ANY PURPOSE NOT EXPRESSLY AUTHORIZED IN WRITING BY TYCO/Electronics IS PROHIBITED.